

# THE TRUMPET BRAY

NEGASS  
The New England Gilbert and Sullivan Society  
P.O. Box 367, Arlington, MA 02476-0004

Vol. XXIX No. 2  
October 2004

~ Sing Happy-go-lucky, my Lady, O! ~

**PRINCESS IDA sing-through**  
**Sunday, October 17 at 2:00**

On October 17, at 2 pm, we will gather in the home of Marion Leeds Carroll for a sing-through of **PRINCESS IDA**. This sing will not be pre-cast: just show up! Scores will be available. Accompanist TBA.

## Roles:

Sopranos: Princess Ida, Lady Psyche  
Mezzo: Melissa, Sacharissa  
Contralto: Lady Blanche  
Tenors: Hilarion, Cyril  
Baritones: King Hildebrand, King Gama, Florian  
Basses: Arac, Guron, Scynthus  
Speaking: Chloe, Ada

**Directions:** The address is 111 Fairmont St, Arlington. Fairmont St. is in East Arlington, very close to the Arlington/Cambridge border.

**By bus:** Take the #77 Arlington Heights bus from Harvard Sq. (not the #77 North Cambridge bus! - it will let you off too soon) to Fairmont St, which is three blocks across the border (that is, Alewife Brook Pkwy/Rt 3) from Cambridge. Fairmont is on your left, almost across the street from the CVS. Walk two blocks to the dead end. 111 is the last house on your right.



**By subway:** Visit <http://leedscarroll.com/Graphics/Scrapbook/directions.shtml> for a map, and for detailed directions from the Alewife T stop.

**By car:** Take Mass Ave to Arlington. Fairmont St is three blocks from Alewife Brook Parkway/Rt 3, almost across the street from the CVS. Drive two blocks to the dead end. 111 is the last house on your right. **Or** -- take Rt 2 to the Lake Street exit. Take Lake St into Arlington (not into Belmont!). Drive to Mass Ave, turn right, drive past the next traffic light (at Thorndike St) to Fairmont St, turn right, drive two blocks to the dead end - and there you are! - last house on the right!

**NB - people with cat allergies** might want to take a dose of antihistamine before arriving - I have 2 friendly cats. --mlc



## MAIDEN VOYAGE:

This is the first issue composed entirely by Bray Journeyman tsw. We hope the Sudden Transition, if not Simply Elysian, is at least unobjectionable!  
--tsw

## RECENT MEETINGS

### PICNIC MEETING: With Unusual Revelry

On Sunday, Aug 29, Dr. and Mrs. David Sheldon generously opened their home to the NEGASS picnic for the fourth (*gasp!*) year!

We began at 4 p.m. with a complete sing-through of *PIRATES* (on book, of course), accompanied by **Juliet Cunningham**, followed by feasting and general merriment.

During the feasting, many of us watched a videotape of *COX AND BOX*--part of the BBC/PBS Complete G&S series, but lamentably not included in the DVD reissue.

Major-General Stanley:	<b>Brian Bermack</b>
The Pirate King:	<b>Dave Leigh</b>
Samuel:	<b>T. Skyler Wrench</b>
Frederic:	<b>Tom Dawkins</b>
Mabel:	<b>Rebecca Burstein</b>
Edith:	<b>Jess Raine</b>
Kate:	<b>Marion Leeds Carroll</b>
Ruth:	<b>Isabel Leonard</b>
Sergeant of Police:	<b>J. Donald Smith</b>
Isabel:	<b>Janice Dallas</b>
Accompanist:	<b>Juliet Cunningham</b>



### IN POINT OF FACT, HE'S GONE ABROAD

Though we traveled to Penzance only in imagination, long-time NEGASSERS **John Bennett** and **Donna Anton** are going there in actuality—to stay!

#### *He writes:*

I am leaving Massachusetts, with my wife **Donna Anton**, on September 8<sup>th</sup> to go into 'semi-retirement.' I forget how many years I have been a member of NEGASS but it is certainly more than 10. Over the years I have performed in SLOC and Sudbury Savoyard productions, the most recent being SLOC's "A Gilbert and Sullivan Fantasy," and I will miss all of the friends I have made in the G&S community. Donna has been involved too with some accompaniment and some amusing words for 'little list' songs. Could you find a line in *The Trumpet Bray* to let folks know of our departure? We are heading for our home in Hayle, Cornwall, England and we can be reached at [jb@john-bennett.com](mailto:jb@john-bennett.com). We would love to see anyone who ventures to that remote, but beautiful part of Britain. We will be, after all, only 9 miles from Penzance!

-- JOHN BENNETT



Tentative Meeting Schedule, 2004-2005	
October 17	<i>IDA</i> sing-through, Arlington, MA
December 11	Christmas party, Lexington
January 23 or 30	Newton film viewing: <i>IOLANTHE</i> ?
March 13	LMLO <i>PINAFORE</i>
April 17	Potpourri: <i>TRIAL</i> /Bab Ballads/ G without S
June 5	Elections/Fantasy meeting

**NEXT BRAY COPY DEADLINE: Nov.14, 2004**

**Next Bray Stuffing: Sunday Nov. 21, 2004 at 3:00 PM**, at the home of **mlc**: see *IDA* sing directions on p. 1 of this issue.



### MEMBER NEWS

**Welcome, Welcome We!** new members **Brian Bermack** of Medford, a singer, who is directing *IOLANTHE* for the MIT G&S Players this November, and **Jessica Raine** of Brookline, a singer, who is co-vocal director of the same.

**Learn the truth with sorrow:** We received word, from their daughter, that Charter Members **Leonard Weaver** and his wife, **Frances**, died this past Spring/Summer. Our condolences.



#### **David Stone writes:**

"Those who remember the D'Oyly Carte of the 1970s may be interested to know that **Royston Nash** has been conductor of Cape Symphony Orchestra for 25 (*gasp*) years."

That Cape Symphony Orchestra is in Hyannis, MA, and they are doing a concert with several well-known G&S singers **the weekend after this Bray is published**, so put on your calendars now! Details in Calendar section. --*tsw*





**IT IS WITH GREAT SORROW** that we hear of the passing of consummate Savoyard **Kenneth Sandford**. He died at home on September 19th, at the age of eighty.

**Sam Silvers** writes:

I was fortunate to be able to perform with Ken Sandford in 1985, and he went out of his way to help me in 1996 when I performed Private Willis in a "festival production" at the Philadelphia leg of the Festival. He was indeed a very kind and generous performer as well as a kind and generous man. He loved the theatre and the audience loved him.

I think everyone who ever saw or heard him perform will miss him. --**SAM SILVERS**

#### Another tribute to Ken from **Tony Watts**:

What can I possibly say? As is known on this list my admiration for Ken Sandford as both singer and actor knows no bounds. I consider him one of the finest, most subtle comic actors I have ever seen on the operatic stage.

He was an absolute master of Gilbertian dialogue, and his timing was unsurpassed. Nobody ever used the dramatic pause better than Ken. Starting in an era in which the D'Oyly Carte stagings were a good deal more hidebound than they were later to become, he, nevertheless, managed to create a real character in every role he played. As already observed, his reactions when another artist was singing were evidence of not only his consideration for his fellow artists, but also how immersed he was in the part he was playing.

Each of his creations even moved differently on stage - from the lumpen heavy tread of his Shadbolt to the grace and elegance of his Don Alhambra (with his wickedly roving eye) and the pompous waddle of Pooh-Bah, every one was a real person. He was a singer of tremendous innate musicality who performed his two solo arias in *SORCERER* as though they were long-breathed pieces of bel canto by Bellini rather than a type of Victorian drawing room ballad. His 'Time Was When Love And I Were Well Acquainted' was probably the finest piece of singing I heard in twenty years of attending performances by the old D'Oyly Carte. His Dr. Daly was wonderful, but if I had to choose one role by which to remember this great artist I would select his superlative Sir Despard which demonstrated the range of his acting: from the hilarious melodramatics of the first act, to his tender, tolerant concern for Mad Margaret in the second.

... Mere words could not possibly thank him for the immense amount of pleasure his wonderful singing and acting gave me over the years. I would like to send my condolences to his wife, family and all his close friends as however great the loss fans like myself are feeling, theirs is far greater.

Goodbye Ken. I will miss you enormously.

--**TONY WATTS**



**NEGASS COMPANY PROMOTER SEEKS APPRENTICE:** **Linda Silverstein** inquires whether anyone is interested in doing publicity for upcoming NEGASS meetings. This usually involves sending press releases via email to several newspapers. The job also involves placing and coordinating payment for NEGASS ads printed in programs. Linda can provide guidance, if necessary. Contact her at: (781) 828-6361 or [linda@negass.org](mailto:linda@negass.org).



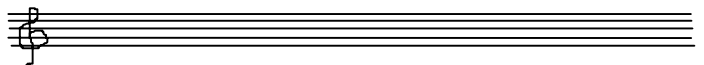
**PAN-ATLANTIC G&S** An exhibition "Gilbert and Sullivan: From London to America" featuring items from the collection of **Dr. Harold Kanthor**, will be on exhibit at the University of Rochester Library (Rochester, NY) from **October 2, 2004 - March 15, 2005**. It will focus on the original London productions and their transfer to New York and other American cities. For further information see the University of Rochester web site: <http://www.lib.rochester.edu/rbk/Exhibit3.stm>.

-- **J. DONALD SMITH**



#### **HIS ADDRESS? KNIGHTSBRIDGE!**

A great many addresses in our "Between-Bray News" email list have become defunct. If you signed up for this list, but have not received a Between-Bray email in the last month, please re-sign with a working address at <http://www.negass.org/Pages/EMail.html>. Do likewise if you wish to join this list (for short-notice audition notices and other important local G&S events). -tsw



❧ R E V I E W S ❧

❧ **THE CHIEFTAIN** at Sam Silvers' sing-in, NYC

About the time **Sam Silvers** announced his April sing-in, several Savoynetters realized that this would be a good time to try out Paul Howarth's new typesetting of the score to **THE CHIEFTAIN**, by FC Burnand and Arthur Sullivan. Central among these were **Andi Stryker-Rodda**, **Phil Sternenberg** and **Larry Byler** who put in many hours going over the score carefully for typos. [Andi wrote: *The complete editorial team consisted of: Sternenberg (emphasis on vocal parts, whole VS); Byler, Marc Lewis, Marc Shepherd, Steve Lichtenstein, David Jedlinsky, myself, and notes from various individual performers.*]

The appeal for a producer or organizer was graciously answered by **Marc Lewis**, who cast the show, organized rehearsals the week of the sing-in, and wrote a brief narration interspersed with a few lines from the libretto to explain the action.

The enthusiastic cast consisted of

Vasquez	<b>Phillip Sternenberg</b>
Grigg	<b>Doug Whaley</b>
Pedro Gomez	<b>Jim Cooper</b>
Ferdinand	<b>Marc Lewis</b> (replacing <b>Richard Holmes</b> who sang in <i>Götterdammerung</i> at the Met that afternoon!)
Sancho	<b>Dan Kravetz</b>
Jose	<b>Barry Hilton</b>
Blazzo	<b>Marc Lewis</b>
Rita	<b>Elise Curran</b>
Inez	<b>Carole Round</b>
Dolly	<b>Frances Yasprica</b>
Juanita	<b>Emily Gouillart</b>
Accompanist:	<b>Andrea Stryker-Rodda</b>

The story describes a tribe of bandits who live in a mountain pass in Spain, (not far from another pass where Carmen and her bandits live, as Marc Lewis pointed out in a faux introduction containing a few bars of Bizet.)

In this story, the chieftain of these bandits has been missing for a year, and the remaining bandits (the Ladrones) have decided that their laws require them to forcibly anoint the first stranger



to come through the pass as their new chieftain and marry him off to the fearsome Inez, wife of the missing chieftain, who actually has absconded with their gold. That person is the British tourist Peter Grigg, played here comically by Doug Whaley, who even managed to work sheep and pig puppets into his song about how he missed his farm back home. The story gets sillier than this, but most of the singers and audience found that the show contained a number of really charming small ensemble numbers and a few moments of real beauty in the solos.

Particularly noted was Inez's song "My parents were of great gentility," which quoted liberally from something that sounded much like "Carmen," and Rita's song "Only the night wind sighs." Also great fun was the drinking song "Let us live a life of pleasure," in the Act I finale, pre-reminiscent of "The Student Prince," and the second act Sestet "be mum, be mum to every chum."

The story ends when Grigg decides to keep his second forced marriage secret from his real wife by buying the photograph that was taken at the wedding, just as the missing chieftain returns and is forced back into office with his stolen gold by the annoyed Ladrones. The music ends with some really delightfully tricky dance rhythms somewhat reminiscent of the hemiola at the end of **THE GONDOLIERS**.

As an encore, **Richard Holmes** arrived and sang the big solo number "La Criada" that the sing-in skipped over. It is quite spectacular as a solo performing number, but really seems out of place in the actual flow of the show.

We should do one of these ephemera more often!

- JIM COOPER



❧

❧ **PATIENCE** at Glimmerglass Opera

I had the very great pleasure of attending the Saturday August 14<sup>th</sup> matinee performance of the **Glimmerglass Opera** production of **PATIENCE**. This is hands down the best overall performance of a G&S opera I have ever attended. The performance was outstanding in all respects. What a joy to hear the music performed by top notch professionals in a first class

production in a jewel-box opera house in a superb setting. After an inexplicable nine-year hiatus, it was great to see G&S return so triumphantly to the Glimmerglass stage.

Where to start with the accolades? The production was simple, with Bunthorne's Castle a mansion that turned at various angles to allow a changing backdrop for the soloists and chorus to work with. The simple set really showed up the stunning (and I do mean stunning) costumes. While the dragoons were in the red and yellow ("Primary colours!") attire of the dragoon guards, the women were in very becoming 1920-style gowns. While some reviewers thought the staging wild, I thought it was quite traditional and well planned and executed.



lose a lot of the intimacy of the Glimmerglass setting, the performance is definitely worth a trip, since it will probably include most of the Glimmerglass leads.

Finally, the director, **Tazewell Thompson**, wrote a charming introduction to the show in the program. While a well-known opera director, he is new to G&S. He wrote about his affection and respect for the G&S devotees whom he admitted know much more about the Savoy opera than he ever will. That affection showed in his work. I can't wait for Glimmerglass to do another G&S show. I will be the first in line to buy tickets.

--MILES CARY LEAHEY



### ENGAGED in New York

Carole and I saw a performance of Gilbert's play *Engaged* at the Lucille Lortel Theatre in Greenwich Village Sunday afternoon, 2 May 2004. It was produced by the **Theatre for a New Audience** and directed by **Doug Hughes**.

The cast was well chosen and thoroughly professional. **Jeremy Shamos** gave a bravura performance as Cheviot, and was the engine of the play (as was **Bill Kuhlman** in our [Sudbury Savoyards] version). **David Don Miller** was an interesting choice as Angus; he was a big strapping fellow who looked a lot like Peter Stormare, the murderous thug in *Fargo*. That gave an extra spin to Cheviot's line "I will *not* curse him." The Scots dialect was well handled, although the director chose to change 'twa pund' to 'two pounds,' presumably in the interest of intelligibility (my position is that since Cheviot has already established the sum as 'two pounds,' Maggie and Angus are free to indulge in 'twa pund'). I missed the hug after the transaction was concluded.



The performance was well attended and the audience appreciative. I noticed a phenomenon I've seen in other Gilbert shows—a subset of the audience will find one line funny, and a different group will find the *next* line funny, so there's almost continuous chuckling throughout the scene. I found almost every line funny, and thoroughly enjoyed myself.

-- CHUCK BERNEY

**Jeffrey Lentz** was a stellar Bunthorne. His costume made him look like Swinburne on acid--very 1960s. His rival poet was played by **Kevin Burdette**, who showed a large bass-baritone with a good upper extension. The highlight of the show for me was the duet "When I go out of door." The staging required Bunthorne and Grosvenor to do more intricate dancing before pulling out the stops in the obligatory encore. (This production had the luxury of casting two poets who are very similar physically). The three regimental officers were led by a strong-voiced Colonel in **Jake Gardner**. Perhaps the best-known singer in the cast, Gardner was having the time of his life in his two patter numbers in Act I. The Duke was performed by **Darren Anderson**, who was very funny. The major was handled by **Christopher Burchett**, who displayed a good voice and some mean dancing skills in the Act II quintet. He would have made a very good Grosvenor.

I was very sorry to see it end. For a Savoyard, it doesn't get much better than this. Even my nine-year old daughter, who cares little for G&S, liked it, although she concluded that it was "not as good as the Mikado." I agree. But it is my own (and my wife's) personal favorite of all the G&S canon. For those who missed it this summer, the production will be traveling to the New York City Opera in either 2005 or 2006. While it will



DID ANYONE CATCH...

- The Andover Phillips Academy's *PIRATES* in May?
- The Savoyard Light Opera Company's Aug 1 concert, "5/29/1911 - A Gilbert & Sullivan Fantasy"?
- New England Light Opera's July 21st Gilbert and Sullivan Night?

Tell Us, tell us all about it! - mlc



CALENDAR

October 7, 1893, *Utopia, Limited* opens  
October 10, 1881, Savoy Theater opens

THESPIS IN IL: MITG&SP/NEGASS member Ezra Pesach is spreading the word about the Savoy-aires of Evanston, Illinois, www.savoyaires.org/, who are performing *THESPIS* on October 1-3 and 7-9, 2004. They are using Kingsley Day's acclaimed music.

D'OYLY CARTE CELEBRITIES HERE IN MASSACHUSETTS! Cape Symphony Orchestra presents: *Gilbert and Sullivan & Nash Saturday Oct 9 at 8:00 PM, Sunday Oct 10 at 3:00 PM.* BHS Performing Arts Center, 744 West Main Street, Hyannis, MA Tickets: \$26 - \$53

Royston Nash, Conductor and Music Director of the CSO, was famous early in his career as the conductor of the great D'Oyly Carte Opera Company. Tenor Geoffrey Shovelton, soprano Deborah Clague and baritone Richard Conrad will sing. For more info contact Eileen A. Tata at 508.362.1111 X100 or visit www.capesymphony.org.



THE MAINE ON WHICH WE DRAW  
A 6-hour G&S singathon (leads already cast) Saturday 23 October, noon to sevenish, at Center for the Arts, 11 Pleasant Street, Brunswick, Maine. Program: *PRINCESS IDA, THE MIKADO, RUDDIGORE, THE GONDOLIERS*  
Contact: Barry Hilton at barryhilton@earthlink.net

MIT Gilbert & Sullivan Players' Fall show will be *IOLANTHE*. Producers: Nick Bozard & Garry Zacheiss; Stage Director: Brian Bermack; Music Director: Jimmy Jia; Vocal Directors: Jessica Raine & Matthew Morse.



Performances will be November 12, 13, 4, 18, 19, 20 and 21 in the Sala de Puerto Rico in the MIT Student Center.

Yes, We know it's not...

The 2nd Annual Boston Cure Project Halloween Concert, featuring popular local G&S performers, (including Tom Dawkins, David Goldhirsch, Eric Schwartz, Marion Leeds Carroll, Dan Kamalic, Dave Leigh, Stephanie Mann, Tom Weber), will be held October 24, 7 PM at Pickman Auditorium, Longy School of Music, 27 Garden Street, Cambridge, MA. For ticket info visit www.bostoncure.org or call Ruth Seidman at 617-734-7820.



NEGASS friend Ben Sears is Producing Director of the Gershwin's *STRIKE UP THE BAND* in the original 1927 version (*Boston premiere*). He writes, "This is probably their most G&S-influenced show in terms of book, lyrics and music."

Concert performances Nov. 5 at 7:30pm & Nov. 7 at 3:00 pm, Pickman Auditorium, Longy School of Music, 27 Garden Street, Cambridge, MA More info: http://www.benandbrad.com/season.html  
Pre-concert talk for both performances, one-half hour before the show.



Valley Light Opera of Amherst, MA will present *RUDDIGORE* November 5 and 6 at 8PM, November 7 at 2PM, and November 12 and 13 at 8PM, at Amherst Regional High School. More info: http://www.vlo.org/

The Raylynmor Opera of Keene, NH, is also performing *RUDDIGORE*. Theirs is November 19 and 20

at 8 pm, and Nov 21 at 2 pm, at the Colonial Theater in Keene. Tickets can be purchased at (603) 352-2033 or [www.thecolonial.org/musicopera.htm](http://www.thecolonial.org/musicopera.htm). More info: [djyanish@yahoo.com](mailto:djyanish@yahoo.com). The cast includes **Dan Kamalic** as Robin, **Anne Dreyer** and **E. Mark Murphy**.

November 17, 1877, *The Sorcerer* opens  
November 18, 1836, W. S. Gilbert is born

☺☺ **The Sudbury Savoyards'** winter show will be *THE MIKADO*, stage-directed by **Kathy Lague**, with music direction by **Steve Malonek**. Auditions will be held at Hawes Hall at Sudbury United Methodist Church on Monday and Tuesday the **22nd and 23rd of November**. (check their website to confirm: <http://www.sudburysavoyards.org/>) Performances will be the last two weekends in **February 2005**.



**Friday, November 5th**, the Sudbury Savoyards will hold a "2-Ring Circus kick-off party" with a *MIKADO* sing-through. The location remains to be finalized. Check their website for the latest info.

☺☺ The Middletown-based **Connecticut G&S Society** will perform *MIKADO* on **Nov. 12 and 13 at 8pm and Nov. 13 and 14 at 2pm**. The production, with orchestra conducted by **Dr. John Dreslin**, will take place at Middletown High School. **Bob Cumming** will direct. Within CT info may be had by calling 1-800-866-1606. From out of state call 1-860-873-2832.

Principal actors are:

Mikado -- **Laurie Weissbrot, Mark McNally**  
Nanki-Poo -- **Ron M'Sadoques, John Craft**  
Ko-Ko -- **Stephen Grover, Allan Church**  
Pooh-Bah -- **John Swanson**  
Pish-Tush -- **Mike Reynolds, Michael Silvestri**  
Yum-Yum -- **Sarah Callinan, Deanna Swanson**  
Pitti-Sing -- **Valerie Heckman, Jackie Alvarez-McKiernan**  
Peep-Bo -- **Teresa Hollo, Megan Stephan**  
Katisha -- **Linda Nadeau, Carol Connolly**

Dates and times are **Friday, Nov 12** at 8:00, **Saturday, Nov 13** at 2:00 and 8:00, and **Sunday Nov 14** at 2:00. Middletown High School auditorium, Middletown CT. Call 1-800-866-1606 for tickets or more information.

☺☺ **Harvard-Radcliffe G&S Players'** fall show will be *THE PIRATES OF PENZANCE*. Performances: **Dec. 2-5 and 9-11**. Contact **Michael Lynch**, [mplynch@fas.harvard.edu](mailto:mplynch@fas.harvard.edu)

☺☺ **BRUCE MILLER TRIBUTE IN ENGLAND:** Some musicians who had been intending to travel from England to participate in what would have been Bruce's inaugural Light Opera Company production of *H.M.S. PINAFORE* are organizing the official UK tribute to Bruce. **Sevenside Theatre Ensemble** will be beta-testing and presenting the world premiere concert performance of the complete Broude Critical Edition of *PINAFORE* at St. George's Church in Worcester, England, under the direction of Bruce's English colleague, Peter Meason, at the beginning of **January 2005**. Friends of Bruce are invited to participate. Go to <http://bruceimiller.com/events.html> for more info.

☺☺ **Belmont Open Sings**, under the auspices of the Powers School of Music, will hold a sing-along *MIKADO* on Sunday, **January 23, 2005**, at the Payson Park Church in Belmont, with the usual full orchestra. See their web page, at [www.powersmusic.org/belmontopensings.html](http://www.powersmusic.org/belmontopensings.html), for more information.

☺☺ **Lowell Opera Company** plans a **Gilbert and Sullivan cabaret in April 2005**. Visit their website at [www.operalowell.org](http://www.operalowell.org). **Christina Puntoni** writes "It is still in the process of being updated but will be filled with useful information."

☺☺ **ACROSS THE WATER: The Gilbert & Sullivan Society** [Yes, *THE Gilbert & Sullivan Society*] Weekend at **Grim's Dyke** (Gilbert's last home), Harrow Weald, Middlesex. April 1-3 2005. With talks, performances, videos, and a sing-through of *PIRATES*. (Must be applied for and paid by Feb. 1st). More info: <http://www.gilbertandsullivanssociety.org.uk/>.

☺☺ **THE 60TH ANNIVERSARY PRODUCTION of Simsbury Light Opera Company (SLOCO)** will be: *Sullivan and Gilbert a la Carte*. Show dates in 2005 are **April 2, 3, 9, 10 and 16**.

This production is a new work (book by **Griffin and Luchsinger**). It combines biographical material about Mr. Gilbert and Mr. Sullivan with excerpts from the operettas.

The characters include the standard G&S principal



Cartoon in PUNCH, March 28, 1885.

types: soprano, mezzo -soubrette, mezzo-contralto, tenor, baritone, bass and baritone patter singer to play a variety of characters in scenes from most of the Savoy operas. In addition, the show has a number of characters based on historical figures of the time; some who sing (such as **Jessie Bond, Rutland Barrington, and George Grossmith** -- all of whom sang roles in the original productions) as well as the non-singing characters of **Gilbert, Sullivan, Richard D'Oyly Carte, Kitty Gilbert, Mrs. Ronalds** and others. See [www.SLOCO.org](http://www.SLOCO.org) for directions to either site or background on the company

☞ ☞ **SULLIVAN WITHOUT GILBERT:** The New York Gilbert & Sullivan players will be presenting **THE ROSE OF PERSIA** on **Sunday 3 April 2005** in New York City, in staged concert format with orchestra. According to **Andi Striker-Rodda**, this is the first venture into this opera by a professional company in the USA since 1900, or anywhere since 1935.

☞ ☞ **April 8 - 16, 2005, The Blue Hill Troupe** of New York City will be doing a "new" version of **THE GRAND DUKE**, "tightened and rearranged slightly, with the hope of having it make more sense to audiences."

☞ ☞ **The Production Team** for the **SavoyNet** Production in Buxton in **August, 2005**, has been chosen:

Director: **Diana Burleigh**; Music Director: **Dick Stockton**; Producer: **Peter Crichton**. The operas under consideration are: **PINAFORE, IOLANTHE, MIKADO**, and potentially **IDA** or **GRAND DUKE**.

:)

We'd like to remind folks: To subscribe to **SavoyNet**, the G&S mailing list, send a plain text email to [listserv@bridgewater.edu](mailto:listserv@bridgewater.edu) with nothing in the subject line and SUBSCRIBE SAVOYNET *Your Name* in the message body. **Please Note:** SavoyNet's listserv does not accept "rich text" or "HTML formatted" e-mail. If you get an incomprehensible error message, you probably sent a rich text message.

:)

Visit the **Gilbert and Sullivan Archive** at <http://diamond.boisestate.edu/gas/>



## THE NEW ENGLAND GILBERT AND SULLIVAN SOCIETY

PO Box 367, Arlington, MA 02476-0004

Send electronic contributions to [editor@negass.org](mailto:editor@negass.org)

President **J. DONALD SMITH:**

(508) 823-5110; [president@negass.org](mailto:president@negass.org)

Vice-President **TONY PARKES:** [vp@negass.org](mailto:vp@negass.org)

Secretary **CARL WEGGEL:** (978) 474-0396

[carl@negass.org](mailto:carl@negass.org)

Treasurer **RICHARD FREEDMAN:**

(978) 667-0222; [treasurer@negass.org](mailto:treasurer@negass.org) and

<http://www.rfreedman.org>

Program Chair **DAVE LEIGH,** (781) 894-3009 or

[preeta3@yahoo.com](mailto:preeta3@yahoo.com)

### Members at Large:

Hospitality Chair: **CAROL MAHONEY:**

[carol@negass.org](mailto:carol@negass.org)

Company Promoter: **LINDA SILVERSTEIN:**(781) 828-6361 or [linda@negass.org](mailto:linda@negass.org)

Membership Officer: **JANICE DALLAS:** (781) 643-2537, [membership@negass.org](mailto:membership@negass.org)

Newsletter Editor: **MARION LEEDS CARROLL [mlc]**

(781) 646-9115; [editor@negass.org](mailto:editor@negass.org) and

<http://www.leedscarroll.com>

Bray Journeyman: **SKYLER WRENCH [tsw]:** 617-924-5303 or [owlsnest99@yahoo.com](mailto:owlsnest99@yahoo.com)

*NEGASS membership dues are \$15 and up. Please send membership inquiries to **Janice Dallas**, 63 Everett St., Arlington, MA 02474-6921*

Visit the **NEGASS Web Site** at

<http://www.negass.org>

**The Trumpet Bray** can be read on line at

[http://negass.org/Bray/Trumpet\\_Bray.html](http://negass.org/Bray/Trumpet_Bray.html)

- or download pdf versions of recent issues at

<http://negass.org/bray/pdf/>

To receive **Between-Bray E-Mails**, join the NEGASS email list at <http://www.negass.org/Pages/EMail.html>